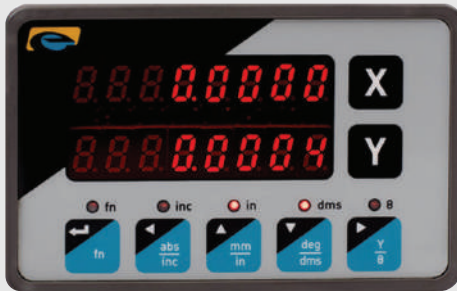


PROFILE PROJECTOR VERTICAL (TABLE -TYPE)



| SPECIFICATIONS | METZ -200 T.T | METZ- 300 T.T SUPREME | METZ - 400 T.T SUPREME |
|------------------------|--|--------------------------------------|------------------------|
| SCREEN | Glass screen with 90° cross line Fitted with graduated rotary ring (0-360°) operated by knob, L.C. 1min. | | |
| SCREEN SIZE | 200mm | 300mm | 400mm |
| Lens AXIS | Vertical | Vertical | Vertical |
| OPTICS (Standard) | 10X | 10X | 10X |
| Optional | 20X, 50X, | 20X, 50X, | 20X, 50X, |
| (Mount) | Screw Mount | Screw Mount | Screw Mount |
| WORKSTAGE SIZE | 150mm X 150mm | 310mm X 210mm | 310mm X 210mm |
| MEASURING RANGE | 25mm X 25mm | 200mm X 100mm | 200mm X 100mm |
| (Optional) | N.A. | X-Axis upto 400mm, Y-Axis upto 200mm | |
| FOCUSING - Manual | 90mm | 90mm | 90mm |
| LINEAR MEASUREMENT | Micrometers | Built-in Glass Scale | Built-in Glass Scale |
| RESOLUTION | 5µm | 5/1/0.5µm | 5/1/0.5µm |
| MEASURING SYSTEM | Micrometers | D.R.O. / PC based Software | |
| PROJECTION ACCURACY | ±0.05% (Contour / Surface) | | |
| ILLUMINATION (Contour) | 24V/150W halogen lamp, illumination control with condenser unit provide light as per lens | | |
| (Surface) | Twin 24V/150W Halogen lamp provides shadowless light on optical axis | | |
| STAND | Pedestal stand with storage | | |
| COOLING SYSTEM | Fan | | |
| POWER SUPPLY | 110/220V AC, 50/60Hz | | |
| OPTIONAL ACCESSORIES | Rotary Table, V-block, Centre Holding Device | | |

DRO FOR PROFILE PROJECTORS



EL 25

- Ergonomic and compact design with panel mounting option
- Basic functions such as Circle and Distance measurement
- Interfaces standard Optical and magnetic RS422 digital encoders
- Linear error compensation for linear axes available
- RS232 communication for software update.
- CE and RoHS approval
- Manufactured with ISO 9001:2015 standard
- Backup memory for 50 results.

The EL250 is an advanced digital readout system for performing three axes (two linear and one angular) geometrical measurement at very high level of precision and accuracy.

EL250 DRO offers simultaneous display of all three axes, along with quick reset keys. For linear axes, it has linear and segmented calibration options.

Functions:

- Line Measurement
- Distance Measurement
- Skew Measurement
- Point Measurement
- Circle Measurement
- Angle Measurement



EL 250



EL 500

The EL550 is an advanced digital readout system for performing three axes (two linear and one angular) geometrical measurement at very high level of precision and accuracy.

Its precise measurement identifies correct rejections. It reduces operator fatigue and provides faster inspection, enhancing productivity.

EL550 offers standard measurement functions and variety of constructions. Additionally it offer result backup utility and DXF export function.

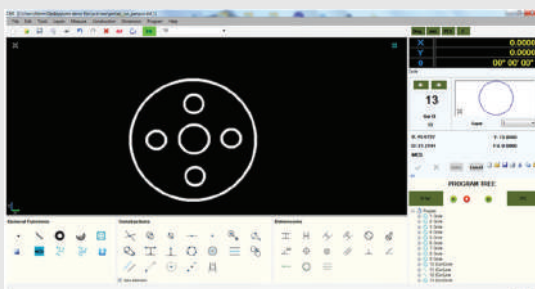
Measurement Function

- Line Measurement
- Distance Measurement
- Skew Measurement
- Wonder Function
- Point Measurement
- Circle Measurement
- Angle Measurement

Constructions

- Point
- Line
- Circle

CMS2000 is a PC based measuring software specially design for profile projector applications.



Functions

- Basic features like Point, Line, Arc, Circle measurements
- All construction features available for constructing a Point, Line and Circle
- Direct Dimensioning like Cad software is possible directly on the measured features
- Dimensions for Distance, Radius / Diameter, Angle are possible
- Dimensioning for True Position, Concentricity, Parallelism, Perpendicularity, Angularity, Straightness, Circularity and Symmetricity are also possible.
- X, Y and Theta Axis DRO display available with single click reset feature available
- Easy program and run facility available
- Tolerancing and SPC facility available for batch inspection and analysis
- DXF import / export facility available
- Automatic edge detection facility available as option
- Report generation in Graphical format, Tabular format, tabular dimensions and SPC report available